



# WATERBUCK LODGE



Nestled perfectly within the Thornybush Nature Reserve which forms part of the Greater Kruger National Park, Waterbuck Lodge embraces the lush undergrowth around the lodge which is evident in the continual flow of water all year round.

This quaint, quiet lodge offers a universal approach to guests needs allowing for small groups, honeymooners, couples, single travelers and is ideal for exclusive use bookings by families. The comfortable lounge and open-plan dining area leads to an elevated outdoor deck which is the perfect place to take in the magnificent sounds of the African Bush. The lodge's very private family size swimming pool offers guests a home-away-from home setting and with the waterhole closely situated makes for enthusiastic game opportunities.

At night, the lodge comes alive with an abundance of night lights perfectly set up around the lodge and leading to the Boma where fire side dining is an African art-form. Meals are an occasion to be celebrated open-air style.



# Lodge Information

---



- All Suites at Waterbuck Lodge have been perfectly positioned to afford privacy.
- With a choice of 4 spacious, fully air-conditioned Suites all with generous bathrooms and an outdoor shower, spectacular views of the African bushveld are easily accessible.
- Daybeds situated on the outdoor deck area allow guests a relaxing and comfortable way to unwind between game drives, taking in the African Sun.

## ROOMS

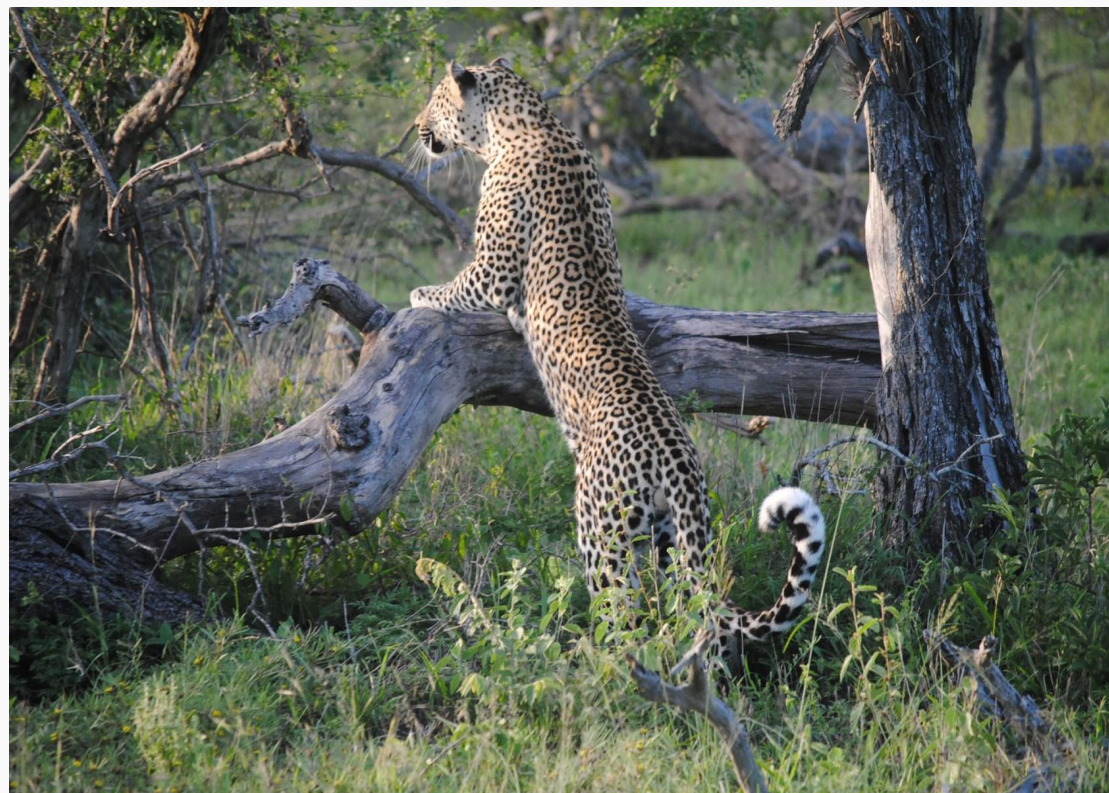
---

- Air-conditioned
- Indoor shower and bath
- Outdoor shower
- Hairdryer
- Tea / coffee station
- USB / International adaptor
- Safe in room

# General Information

---

- Check in 14h00 / check out 11h00
- Included in your stay: all meals, two daily game drives, bottled water, tea and coffee and Wi-Fi in the main areas of the lodge
- Excluded: Beverages, telephone calls, curio purchases, laundry, gratuities, levies, any additional costs incurred or not specified
- All major credit cards accepted except for American Express
- Children of all ages are welcome
- Children under the age of 6 are not permitted on game drive
- Children under the age of 16 are not permitted on bush walks
- Excursions (Hot Air Ballooning / Endangered Centre) may be booked on your behalf at an additional cost
- Beverages, gratuities, levies, any additional activities are not included
- Guests will be required to complete an on-line Health declaration 48 hours prior to arrival together with an indemnity form – a link will be sent to access



# A Typical Day on Safari



- A typical day in the bush starts off with a wake up call at around 05h30 am, depending on the time of year.
- A delicious cup of coffee or tea awaits you on the deck of the main lodge area before you depart on your game drive.
- The excitement of tracking down the early animal risers is briefly interrupted by a sunrise stop, breaking for coffee / tea and a light snack before continuing your adventure. You will return to the lodge at around 09h00 to freshen up before enjoying a tasty brunch with a choice of continental and hot breakfast.
- After brunch, you may choose to join your ranger on an informative bush walk or simply retreating to your room for some down time.
- Afternoon high tea is served at around 15h30 with a selection of sweet and savory treats. The afternoon game drive departs shortly thereafter in search of the Big-5. A sunset stop for a refreshing drink allows for spectacular photographic opportunities of the setting African Sun (weather permitting). The search for nocturnal creatures continues into the early evening before returning to the lodge at around 19h30.
- Upon your return, a welcome drink will await your arrival. Thereafter you may either choose to freshen up or make your way to the bar area for a drink before enjoying dinner beautifully laid out under the African Canvas of stars.